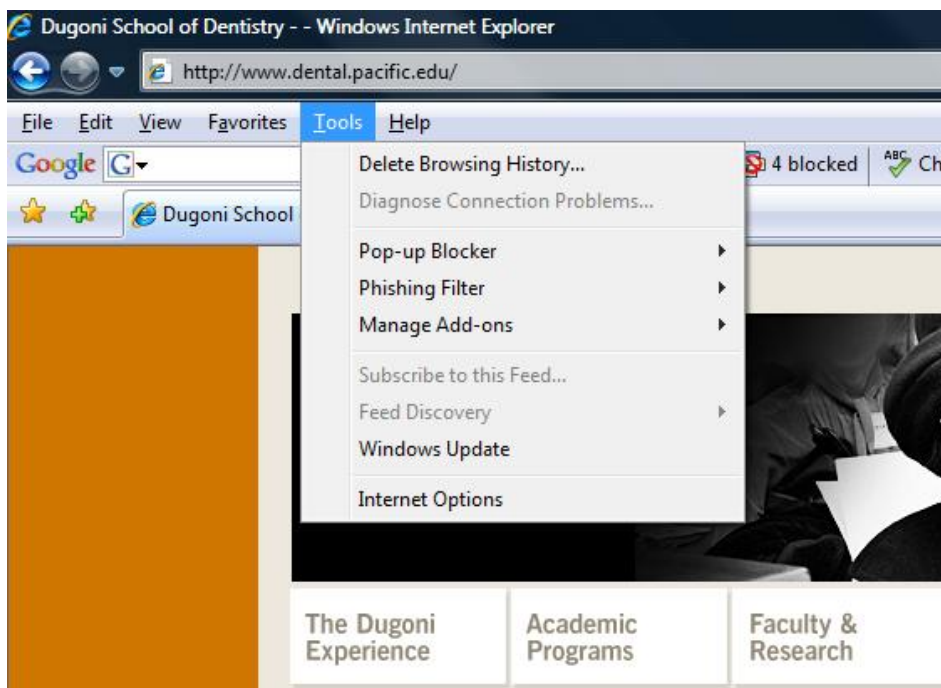
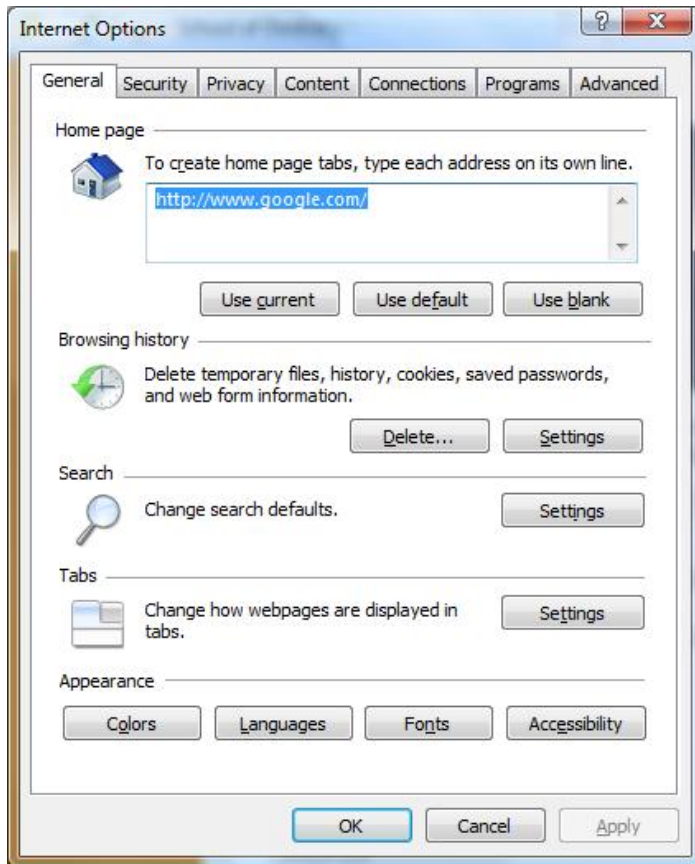


Internet Explorer (IE) Configuration for Intranet Access Inside the School

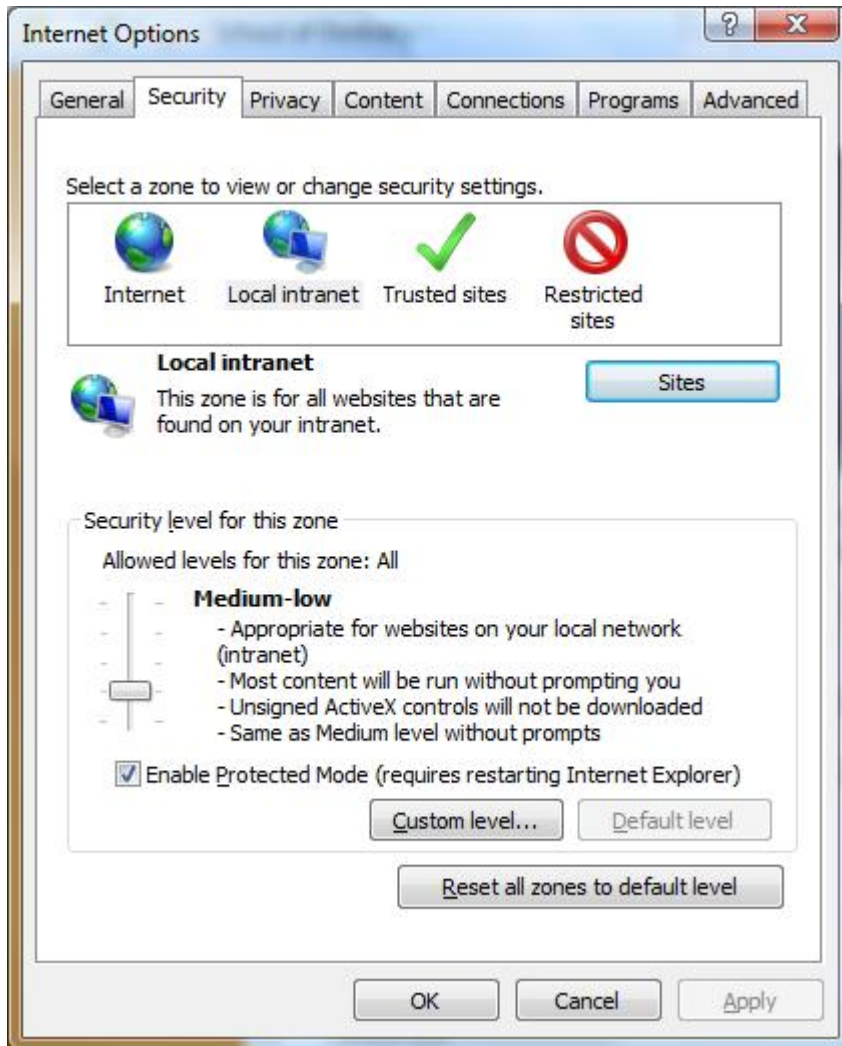
- 1- Open IE from your computer and Click on Tools > Internet Options



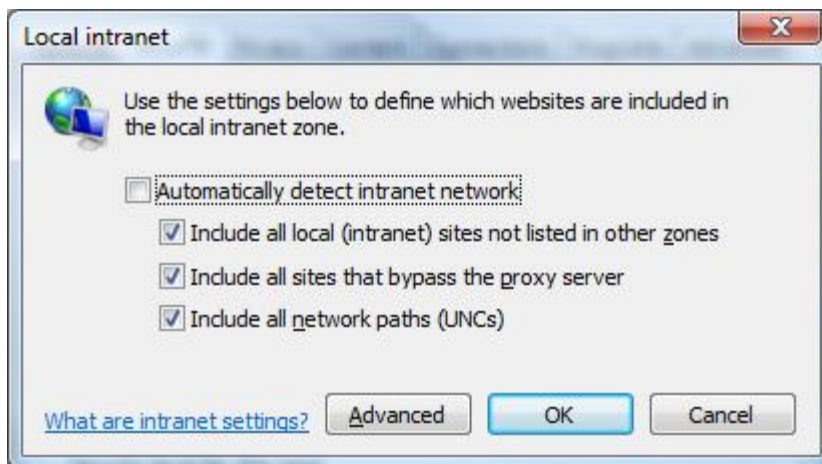
2- Click on the Security Tab



3- Select the Local Intranet and Click on the Sites option



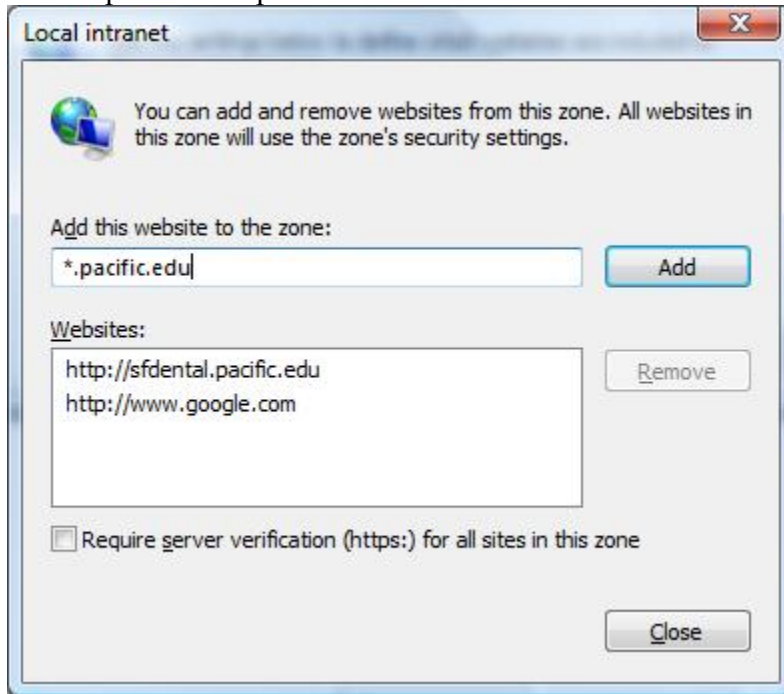
4- Click on the Advanced option



5- Add the following entries one at a time

*.pacific.edu

http://sfdental.pacific.edu



6- Click on Close and Close the rest of the windows