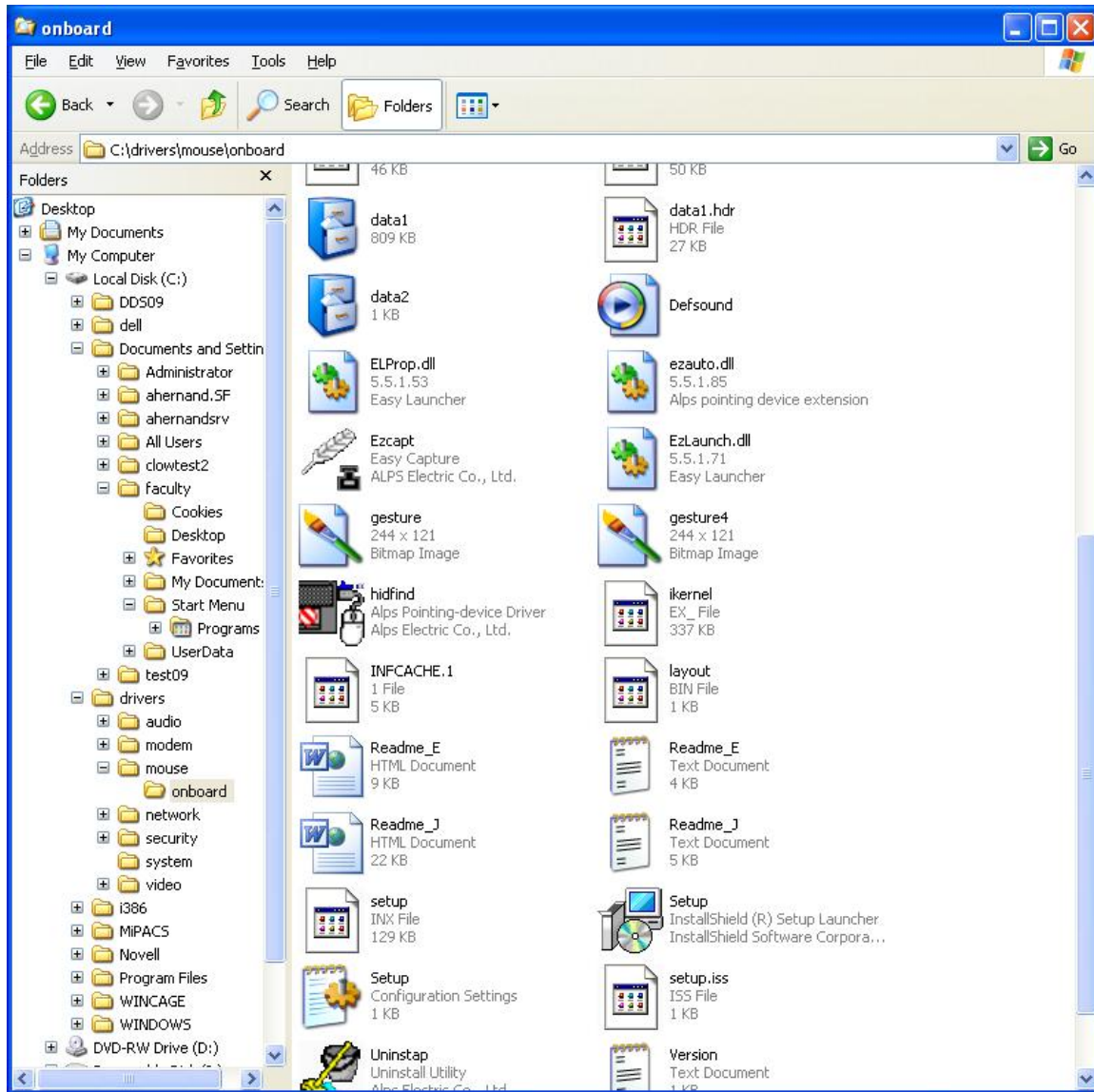


Dell Latitude D620 Laptop Touchpad Configuration

1- Right-Click on the Start Button and select the Explore option.

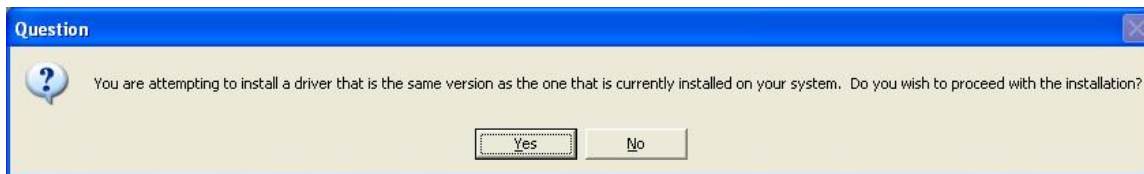


- From the Explore window, browse to Drivers/ Mouse/onboard folder (click on the (+) sign to expand the folder)

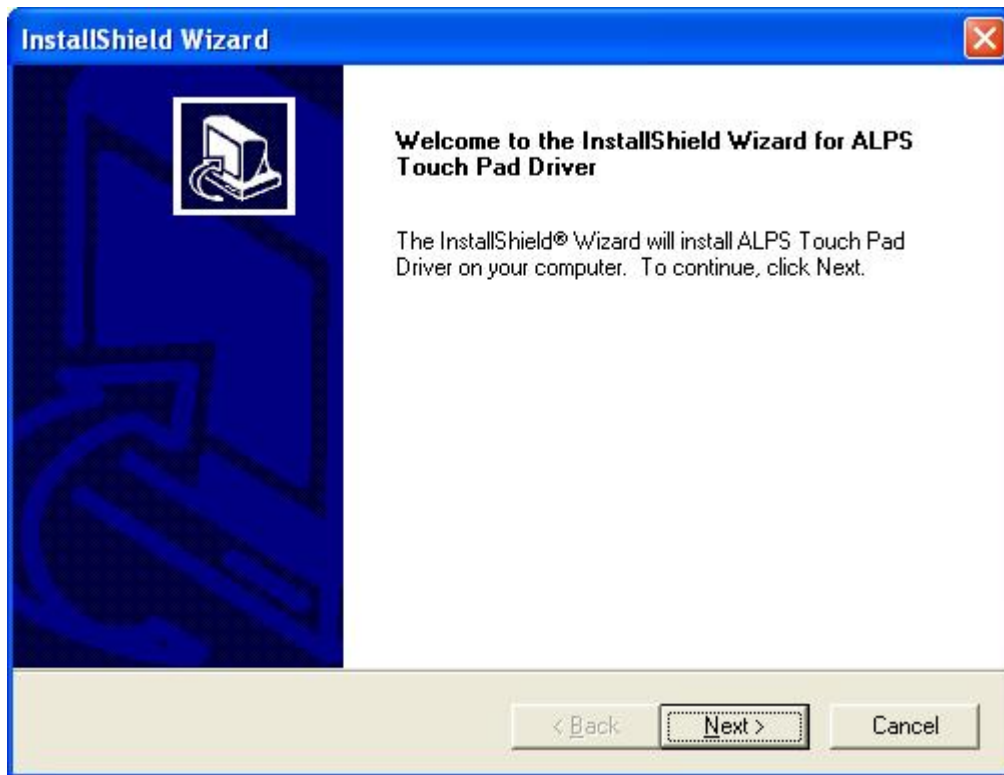


- Double-click on the Setup icon located on the right side of the Explore window.

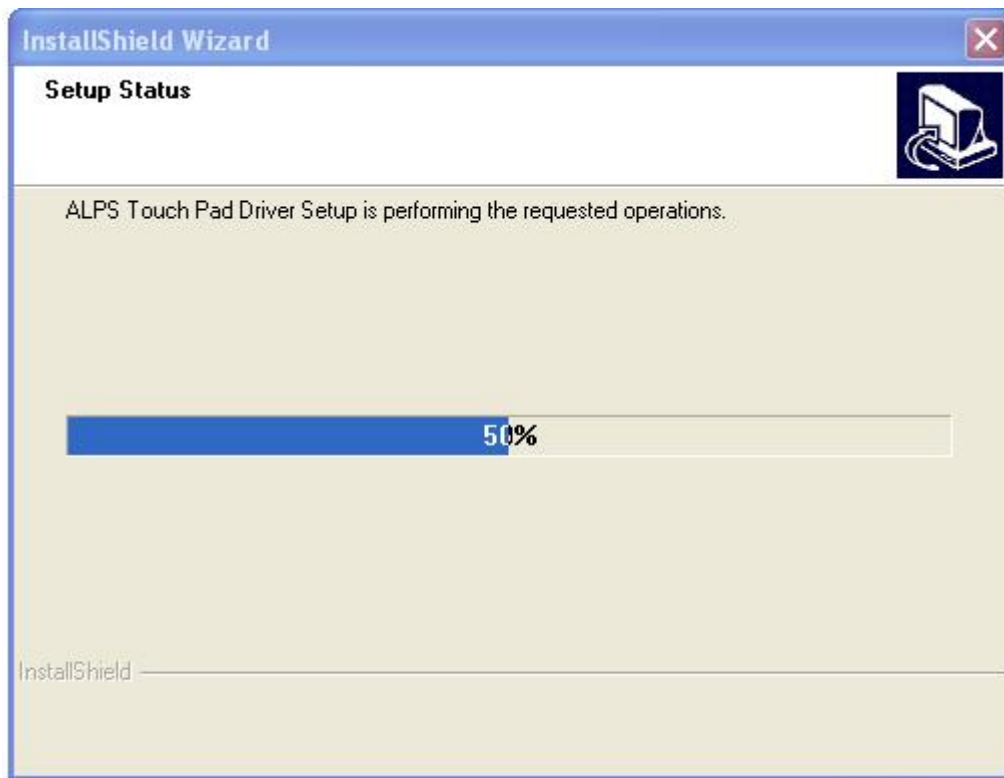
- When you see the dialog box shown below, click Yes.



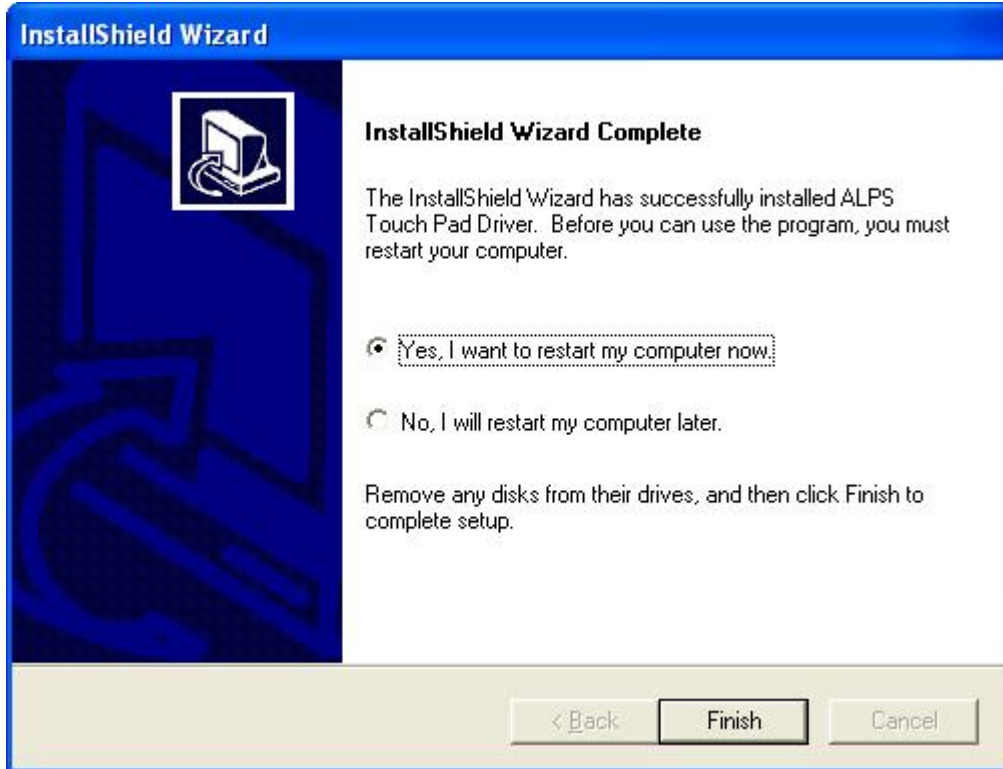
5- Click Next, and the installation process should begin.



6- Drivers will be re-installed.



7-Click Finish.



8-After restarting your computer, you will be able to see your Touch Pad icon on the system tray.



9-Double-click the Touch Pad icon to edit your settings.

