An aerial photograph of the Golden Gate Bridge in San Francisco, California, taken during sunset. The bridge's iconic red-orange towers and suspension cables are silhouetted against a sky of warm orange and pink hues. The bridge spans across the dark blue water of the Golden Gate Strait. In the foreground, a small boat is visible on the water, and a rocky coastline is seen on the right side of the frame.

CONTINUING DENTAL EDUCATION

COURSE CATALOG • SEPT 2021-FEB 2022

World-class learning
in a world-class city...

UNIVERSITY OF THE
PACIFIC
Arthur A. Dugoni
School of Dentistry

dental.pacific.edu/CDEclasses

SAVE THE DATE!



57TH ANNUAL COLONEL ALLYN D. BURKE MEMORIAL DENTAL SYMPOSIUM

Friday and Saturday | June 24 - 25, 2022

Monterey Conference Center
Monterey, CA

Register online at dental.pacific.edu/CDEclasses

CONTINUING DENTAL EDUCATION



EXCELLENCE | INNOVATION | LEADERSHIP | SERVICE

HANDS-ON PROGRAMS

Registered Dental Assistant in Extended Functions Program	6
* Exploring the Dark Side of Black Triangles: The Art of Pink and White Composites	8
* Lights, Camera, Anterior Composites	10
* Super Dentist Boot Camp: Advanced Restorative Techniques with Intensive Hands-on Training	14
* Oral Surgery for General Practitioners: Take Yourself to the Next Level of Proficiency	20

LECTURE PROGRAMS

* New Dimensions in Dentistry - Obstructive Sleep Apnea, Bruxism and TMD: What Do They Have in Common?	12
* Dental Hygiene Symposium: Personalized Periodontal Medicine and Your Mouth is the Gateway to Health and Wellness	16
* This is Not a Drill: Real Life Medical Emergencies in the Dental Office	18
* 27th Annual Pacific/UCSF Island Dental Colloquium – Big Island, Hawaii	22

LIVE WEBINARS

* Special Care Dentistry: A Health-Centered Approach to Oral Care for Special Needs Patients - AGD Protocol Course or Lecture Only	4
Infection Control After COVID-19 and the California Dental Practice Act	19

VIRTUAL COURSE

Registered Dental Hygienist in Alternative Practice Program	24
---	----

* INDICATES NEW COURSE

All courses are held at the Arthur A. Dugoni School of Dentistry at 155 Fifth Street in San Francisco unless otherwise indicated. Course offerings are subject to change. For the most up-to-date program information, go to

dental.pacific.edu/CDEclasses

University of the Pacific, Arthur A. Dugoni School of Dentistry is an ADA CERP recognized provider. ADA CERP is a service of the American Dental Association to assist dental professionals in identifying quality providers of continuing dental education. ADA CERP does not approve or endorse individual courses or instructors, nor does it imply acceptance of credit hours by boards of dentistry. Concerns or complaints about a CE provider may be directed to the provider or to ADA CERP at www.ada.org/cerp.

University of the Pacific, Arthur A. Dugoni School of Dentistry designates these activities for a specified number of continuing education credits. One unit of credit is awarded for each hour of instruction. Please refer to the individual course descriptions for credit designation.

ADA CERP® | Continuing Education
Recognition Program

ACDE
Association for Continuing Dental Education

Special Care Dentistry: A Health-Centered Approach to Oral Care for Special Needs Patients – Lecture and Protocol Course



Two Saturdays
September 18 and October 16, 2021

This lecture and protocol course is intended for dental professionals interested in learning how to treat special needs populations, geriatric patients, medically compromised individuals and patients with intellectual and physical disabilities. Practice management considerations will be discussed relating to in-office and hospital settings.



Tim Verceles

During the live webinar, Dr. Verceles will cover the epidemiology and demographics of the special needs and geriatric dentistry patient population. He will address pre-treatment medical assessment and interprofessional communication strategies. Caries risk assessment, periodontal assessment and occlusal disease evaluation will be discussed and treatment strategies for these complex patients will be presented. Dr. Verceles will share several patient cases as examples.

Participants registered for this two-day program will be required to treat a special needs or geriatric patient at their home dental office and create a presentation to give to Dr. Verceles and fellow colleagues on day two of the program. Instructions and a presentation template will be provided to participants.

This two-day course, in its entirety, will fulfill the 12 CE units in special care dentistry requirement for Mastership in the Academy of General Dentistry.

You Will Learn

- ❑ How to obtain and interpret a patient's medical, dental and social data accurately
- ❑ To list considerations affecting caries and periodontal risk
- ❑ To recognize physical limitations and considerations with respect to the patient's medical diagnosis
- ❑ To create and present a dental treatment and preventive care plan with modifications that reflect the patient's needs and limitations

Who Should Attend

This course is designed for dentists interested in learning how to treat geriatric and other special needs patients.



photos: iStockphoto.com



Two-Day AGD Protocol Course

Tuition: \$495

Program: 9:00 am – 1:00 pm each day

Location: Live, interactive webinar hosted by Zoom

Credits: This activity is designated for 12 units of continuing education credit.

The two-day lecture and protocol program is limited to 30 participants.

Lecture Only (September 18)

Tuition: \$195 Dentists; \$165 Allied Dental Professionals

Program: 9:00 am – 1:00 pm

Location: Live, interactive webinar hosted by Zoom

Credits: This activity is designated for 4 units of continuing education credit.

Faculty

Tim Verceles, DDS, is a clinical professor at the Arthur A. Dugoni School of Dentistry and is a master and fellow of the Academy of General Dentistry. He graduated from University of California, San Francisco School of Dentistry. Dr. Verceles completed his GPR at the VA Palo Alto. He is the former AEGD program director and chief of dentistry at Highland Hospital in Oakland. He currently practices in Hayward, CA and provides hospital dentistry for several skilled nursing facilities and medical centers in the San Francisco Bay Area.

Registered Dental Assistant in Extended Functions Program



September 18, 2021 – May 22, 2022

We are pleased to offer an RDAEF program for licensed RDAs and RDAEFs in California. This comprehensive program satisfies the Dental Board of California's requirements for preparing RDAs and existing RDAEFs for extended functions licensure. Our program goes above and beyond the board's requirements for instructional time to ensure participants receive the highest quality training and education available today and to prepare them for these new responsibilities. All sessions are taught by dental faculty members from the Dugoni School of Dentistry. Participants will receive the same outstanding quality of education that predoctoral students receive at this premier dental school.



Molly Newlon

Brian Kenyon



Leann Miller

Magdalene Rodriguez

The Dugoni School of Dentistry Difference

- ❑ A comprehensive program with 410 hours of instruction (342 for existing RDAEFs), combining virtual and in-person lectures, group discussions, hands-on laboratory and live patient clinical experiences
- ❑ Certification programs for both RDAs and existing RDAEFs at a fully-accredited dental school
- ❑ Personalized instruction led by dental faculty members from the Dugoni School of Dentistry
- ❑ The only Dental Board of California-approved provider of the RDAEF program at a dental school in Northern California
- ❑ Interest-free, flexible payment plans available to qualified candidates
- ❑ Funding available through the Sallie Mae Smart Option Student Loan®
- ❑ Convenient online lectures and a weekend schedule for in-person instruction at the Dugoni School of Dentistry in downtown San Francisco

Program for RDAs

This 410-hour certification program trains and prepares currently licensed RDAs to perform all of the new procedures in extended dental functions which include:

- ❑ Performing patient oral health evaluations, charting and evaluating of soft tissue, classifying occlusion and myofunctional evaluation
- ❑ Performing oral health assessments in community and school-based settings under the direction of a dentist, RDH or RDHAP
- ❑ Sizing and fitting endodontic master points and accessory points
- ❑ Making final impressions for tooth-borne removable prostheses
- ❑ Polishing and contouring existing amalgam restorations
- ❑ Placing, contouring, finishing and adjusting all direct restorations
- ❑ Adjusting and cementing permanent indirect restorations

Additionally, participants will be trained to perform:

- ❑ Cord retraction and final impressions procedures for indirect restorations
- ❑ Fitting and cementing endodontic master points and accessory points
- ❑ Making final impressions for permanent indirect restorations
- ❑ All other procedures authorized and adopted by the dental board*

*Please see Section 1753.6 of the California Business and Professions Code

"I'm so happy I had the opportunity to experience the RDAEF program at the Dugoni School. I appreciated the wonderful professors who were professional, patient and passionate about teaching. I work as an RDAEF and the skills I learned in the program have helped me improve the care of our patients and have enhanced my career" —Caroline Hoang, RDAEF Class of 2019



Program for Existing RDAEFs

This 342-hour program updates existing RDAEFs (who were licensed prior to January 1, 2010) in the new, allowable procedures for RDAEFs described above. Participants who successfully complete this program will be eligible to take the new RDAEF exam, and upon successful completion, will be able to perform all of the expanded duties approved for currently licensed California RDAEFs.

Tuition: \$20,495 RDAs; \$16,495 RDAEFs

Student Kit Fee: \$2,495

Deposit: \$2,000 (non refundable)

Location: Arthur A. Dugoni School of Dentistry, 155 Fifth Street, SF

Credits: This activity is designated for 410/342 units of continuing education credit.

Modules and Dates

The RDAEF program is divided into three modules held on various Saturdays and Sundays—two to three weekends per month—throughout the eight-month period. Both RDAs and existing RDAEFs maintain the same course schedule for Modules 1 and 2. However, existing RDAEFs will take fewer classes in Module 3.* In addition, students will be required to complete restorations in their supervising dentist's office.

Module 1

September 18 –
November 21, 2021
(6 weekends)

Module 2

December 4, 2021 –
January 30, 2022
(5 weekends)

Module 3

February 12, 2022 –
May 22, 2022
(10 weekends)*



REGISTER ONLINE AT
dental.pacific.edu/CDEclasses

Questions?
Contact the Division of Continuing Dental Education
cedental@pacific.edu | 415.929.6486

Exploring the Dark Side of Black Triangles: The Art of Pink and White Composites



Friday and Saturday
October 1 – 2, 2021

When done properly, direct bonding is truly the most creative dental treatment that today's dentists can render. For clinicians, there can be difficulties that make material selection a stressful experience. Without proper shade selection or preparation, the results can be unpredictable at best and aesthetically unacceptable at worst.

Developing treatment strategies for minimally invasive anterior restorations can be challenging. Materials used for these restorations must be easy to handle, exhibit beautiful aesthetics and have the ability to reproduce missing tooth structure or gingival tissue. Participants will learn how to enhance their skills and gain confidence using pink bioactive composites that utilize minimally invasive concepts. Pink is an important component of smile design and Dr. Milnar will discuss how to create artificial gingiva with pink composite.



Frank Milnar

You will apply concepts learned in the lecture to the hands-on workshop on Saturday. The workshop module includes restoring multiple gingival recessions with sulcus reproduction and surface characterizations. Dr. Milnar will explore two new treatment modalities for mitigating negative space: injection molding of heated composite into specialized matrices to eliminate black triangles with concomitant restoratively driven papilla regeneration and pink composite therapy for aesthetic root coverage and sulcus reproduction. This workshop teaches injection molding techniques with Bioclear matrices.

This program is designed for clinicians seeking to improve their skills in order to confidently restore composite cases, from simple to complex. Techniques taught in the course will enable you to create life-like, aesthetically pleasing restorations. Polishing and finishing techniques will be reviewed in detail and a step-by-step procedural approach to solving daily anterior challenges will be presented.

You Will Learn

- Layering techniques required to produce natural aesthetics
- Various finishing and polishing techniques for creating natural aesthetics
- The four visual dimensions of restoration aesthetics: color, hue, chroma and translucency
- How to use a composite system properly, employing different opacities and translucencies
- A new generation of pink bioactive materials that will allow you to create "pink prosthetics"
- Understand the mechanics of building teeth from the inside out using a new generation of pink flowable and paste nano-hybrid composites
- The proper sequence for proper preparation, adhesion, placement, finishing and polishing pink composites
- The art of sulcus reproduction including gingival micro-texture
- How to choose proper anatomic matrix and enhance the contact areas for injection molding and thermally liquefied composite
- The five essentials of injection molding to mitigate unfamiliar negative space



Who Should Attend

This informative workshop is designed for dentists interested in enhancing their aesthetic skills.

Early Bird Tuition: \$795 (for registrations received by September 1)

Regular Tuition: \$845

Program: 9:00 am – 4:00 pm each day

Check-in: 8:30 am on Friday

Location: Arthur A. Dugoni School of Dentistry, 155 Fifth Street, SF

Credits: This activity is designated for 12 units of continuing education credit.

Workshop is limited to 30 participants; includes lunch and morning coffeetea service each day.

Faculty

Frank J. Milnar, DDS, graduated from University of Minnesota, School of Dentistry in 1976. He is an accredited member of the American Academy of Cosmetic Dentistry, board examiner for accreditation and diplomate of the American Board of Cosmetic and Esthetic Dentistry. He maintains a full-time practice in St. Paul, Minnesota, emphasizing minimally invasive dentistry. He has published more than 50 peer-reviewed articles and serves on editorial review boards for dental journals. Dr. Milnar is co-founder of the Minnesota Academy of Cosmetic Dentistry and has lectured extensively. He has been selected as "Top Dentist" and voted into the "Top Dentist Hall of Fame" for the last five years by his peers in the *Minneapolis/St. Paul Magazine*. He has been selected by *Dentistry Today* as one of the top 100 dentists contributing to dental education. He is a visiting faculty member for the Bioclear Learning Center and received the Mastership Award from Bioclear.



photos courtesy of Frank Milnar

Lights, Camera, Anterior Composites



Saturday, October 9, 2021

Today's contemporary direct composite systems enable clinicians to truly be artists by conservatively and aesthetically creating life-like restorations. However, rehabilitating or enhancing a smile with direct composite resins can be a challenge. The task not only requires an understanding of the intricacies of shade selection, but also a mastery of replicating the uniqueness of natural tooth morphology and luster of the restoration. In this hands-on workshop, you will learn the key elements and methods for creating life-like restorations, which are critical for excellence in anterior composite resin restorations, and how to incorporate dental photography to enhance your outcome. You will receive guidance on consistent lighting, exposure, patient positioning, depth of field and all the necessary equipment and materials to create a consistent approach to your photography.



Troy Schmedding and Nathan Yang



photo courtesy of Troy Schmedding

You Will Learn

- Photography skills to enhance your clinical outcome
- Composite characteristics to help you mimic natural tooth structure
- Layering strategies to increase your predictability in achieving beautiful restorations
- Finishing and polishing techniques to help create the "wow" factor

Who Should Attend

This workshop is intended for dental professionals looking to enhance their anterior composite skills and basic photography to improve aesthetic outcomes.

Early Bird Tuition: \$445 Dentists; \$345 Allied Dental Professionals (for registrations received by September 9)

Regular Tuition: \$495 Dentists; \$395 Allied Dental Professionals

Program: 9:00 am – 4:00 pm

Check-in: 8:30 am

Location: Arthur A. Dugoni School of Dentistry, 155 Fifth Street, SF

Credits: This activity is designated for 6 units of continuing education credit.

Workshop is limited to 30 participants; includes lunch and morning coffee/tea service.

Faculty

Troy Schmedding, DDS, has been a practicing cosmetic and restorative dentist for 25 years. He is a 1993 honors graduate from the Arthur A. Dugoni School of Dentistry. He currently maintains a private practice in Walnut Creek, California. Dr. Schmedding holds accreditation status in the American Academy of Cosmetic Dentistry. He also works with numerous manufacturers on implementation and testing of various restorative products being brought to market. He lectures and teaches nationally, as well as internationally, on both aesthetic and restorative dentistry.

Nathan Yang, DDS, served as a clinical assistant professor in the Department of Integrated Reconstructive Dental Sciences from 2007 to 2018 at the Arthur A. Dugoni School of Dentistry. He received his DDS degree from the Dugoni School of Dentistry in 2006. Dr. Yang teaches clinical dental photography and maintains a private practice in San Francisco.

University of the Pacific, Arthur A. Dugoni School of Dentistry would like to acknowledge and thank Vista Apex for their generous support of this program.

SAVE THE DATE!

"In Plain Sight: Confronting the Human Trafficking Crisis in the Dental Setting"

Live webinar presented by
Kandice Swarhout, RDH, LPC

Saturday, March 26, 2022
9:00 am – 11:00 am
2 CE units

Special pricing: \$99

Register online at dental.pacific.edu/CDEclasses

photos: iStockphoto.com

SAVE THE DATE!

36th Annual Charles A. Sweet, Sr. Pediatric Dentistry Memorial Lecture

Presented by Martha Ann Keels, DDS, PhD

April 23, 2022 | 9:00 am - 4:00 pm | 6 CE units

Arthur A. Dugoni School of Dentistry | 155 Fifth Street, San Francisco

For more information or to receive a brochure for this annual program, contact cedental@pacific.edu or (415) 929-6486.



**Obstructive Sleep Apnea, Bruxism and TMD:
What Do They Have in Common?**

University of the Pacific, Arthur A. Dugoni School of Dentistry and Delta Dental of California are pleased to present our 12th collaborative program designed to provide you with the best in continuing dental education. This year's program will evaluate the interaction between disturbed sleep, bruxism, GERD, erosion and temporomandibular disorders. Moderated by Dr. Eugene Santucci, the three speakers—Drs. Chenin, Noble and Young—will share how these topics correlate and will discuss the latest concepts, techniques and methodologies. Our goal is to offer you practical, useful and clinically relevant information that can be easily incorporated into your practice.



**The Pathophysiology of Obstructive Sleep Apnea
Douglas Chenin, DDS**

In this lecture, Dr. Chenin gives a colorful introduction to obstructive sleep apnea (OSA) from a 3D CBCT imaging and dental anatomy focus. The course will cover terms, concepts, how to screen patients for OSA and how it is diagnosed. Multiple cases will be presented with photography and CBCT imaging to highlight the anatomy involved in OSA. Emphasis will also be placed on how OSA correlates with TMD, bruxism and other health complications and comorbidities. This is a great introduction to obstructive sleep apnea and its anatomical basis for anyone interested in this topic.

You Will Learn

- ❑ To understand the basic terms and concepts of OSA as a sleep disorder
- ❑ To recognize the signs and symptoms of OSA that occur during wakefulness and sleep
- ❑ To review the associated health complications and comorbidities that are correlated with OSA
- ❑ To explore the role of 3D CBCT imaging within dental sleep medicine



**Sleep Bruxism: Myths, Misconceptions and Management Strategies
Ward Noble, DDS, MS, MSED**

Knowledge of sleep bruxism has been clouded by various opinions, myths and misconceptions. Parafunctional behaviors, including sleep bruxism, awake bruxism and clenching, are very prevalent and have received much attention by the dental community. Interactions among saliva, erosive tooth wear, sleep apnea and gastric reflux (GERD) play a role in the causes and effects of this problem and will be the basis of this evidence-based discussion. This lecture will help guide practitioners toward useful and practical management strategies.

You Will Learn

- ❑ To better understand the various components of parafunctional movements
- ❑ To understand important differences between awake bruxism and sleep bruxism
- ❑ To understand the interactions of sleep bruxism, sleep apnea, GERD and saliva in the etiology of erosive tooth wear



photo: iStockphoto.com



**The Straw that Broke the Camel's Back: A TMD Case
Andrew Young, DDS, MSD**

Temporomandibular disorders (TMD) are multifactorial. The more factors you identify, and the better you understand those factors, the better you can help your patients. Through a case study, Dr. Young will discuss and showcase an example of how those factors can work together to result in TMD.

You Will Learn

- ❑ To become more aware of the various factors that contribute to the initiation and perpetuation of TMD
- ❑ To appreciate the relationship between bruxism, sleep disorders and TMD
- ❑ To learn when TMD treatment should start when both TMD and sleep disorders are present

Who Should Attend

This informative program is designed for dentists and all team members in the office.

**\$165 SPECIAL DISCOUNTED TUITION
for Delta Dental of California Members only**

- Regular Tuition:** \$295 Non-Delta Dental Members;
\$195 for Allied Dental Professionals
(includes morning coffee/tea service and boxed lunch)
- Discounted Tuition:** **\$165 for Delta Dental Members**
- Program:** 9:00 am - 4:00 pm
- Check-in:** 8:00 am
- Location:** Arthur A. Dugoni School of Dentistry
155 Fifth Street, San Francisco, CA 94103
- Credits:** This activity is designated for 6 units of continuing education credit.

[Register online at dental.pacific.edu/CDEclasses](http://dental.pacific.edu/CDEclasses)

Faculty

Douglas L. Chenin, DDS, is a graduate of the Dugoni School of Dentistry. He worked as director of clinical affairs for Anatomage where he helped develop the Invivo5 CBCT imaging software and surgical guide system. He also worked with BeamReaders, directing the implant planning consultations and surgical guide facilitation services. He is a CBCT technology expert and founded Clinically Correct Inc., a CBCT consulting and education company. His dental practice, San Francisco Dental Sleep Medicine, is limited to the treatment of obstructive sleep apnea with oral appliance therapy.

Ward Noble, DDS, MS, MSED, graduated from UCSF and completed a specialty program in prosthodontics at University of Michigan. He served as a faculty member at UCSF from 1970-2005. After 35 years in private practice, he became a professor in the Department of Preventive and Restorative Dentistry at the Dugoni School of Dentistry, where he has received teaching awards from both students and faculty. He has given more than 250 presentations both nationally and internationally and has written numerous articles and chapters for dental textbooks.

Andrew Young, DDS, MSD, earned his DDS from UCSF, completed a General Practice Residency with the Department of Veterans' Affairs in McClellan, CA, and earned his MSD in orofacial pain from Rutgers School of Dental Medicine, New Jersey. He is board certified with the American Board of Orofacial Pain and a fellow of the American Academy of Orofacial Pain. He is director of Orofacial Disorders at the Dugoni School of Dentistry where he oversees the orofacial pain education, research and patient care. He also heads the school's evidence-based dentistry curriculum.

Super Dentist Boot Camp: Advanced Restorative Techniques with Intensive Hands-on Training



4 Modules: Friday – Sunday

October 29 – 31, 2021

December 3 – 5, 2021

January 28 – 30, 2022

March 11 – 13, 2022

This four-module, 80-hour workshop features numerous topics and intensive training in the broad realm of restorative dentistry, aimed at taking you and your practice to the next level. Each weekend module will focus on a different area of restorative dentistry and will include lecture, lab and hands-on training. Regardless of the stage of your dental career, a seasoned practitioner or a recent graduate, you will benefit from this Super Dentist Boot Camp. *This expanded and redesigned program at the Dugoni School of Dentistry is the only comprehensive, four-module continuum offered by Drs. Stevenson and Lopez in the nation.*



Richard Stevenson
and Cristina Lopez

Module I: Posterior Composite Restorations | October 29 – 31, 2021

This module will cover the latest advancements in the broad realm of posterior composite restorations. It is designed to provide the clinician with a deep understanding of the entire restorative process from materials science and adhesion to the placement and adjustment of the finest composite restorations possible. The importance of isolation and techniques to simplify this important step will be practiced. Knowing when to perform pulp capping and what materials to select are critical to overall success and patient satisfaction. Understanding how to mitigate polymerization shrinkage via 3D layering can be efficient and fun to do. Contouring, finishing and polishing the final restoration with occlusion and longevity in mind will ensure better results.

Module II: Anterior Composite Restorations | December 3 – 5, 2021

The course is designed to provide you with a deep understanding of shade selection, preparation design, layering and polishing techniques to provide excellent anterior composite restorations. Function/dynamic occlusion plays an important role as well as shade matching and contouring in this challenging arena of direct restorations. You will learn the most effective methods to close diastema, restore the fractured incisor and complete chairside veneers with seamless restorations in the aesthetic zone. Using advanced layering techniques is not just limited to artistic geniuses—you can accomplish amazing results with just a few important techniques.

Module III: Posterior Ceramic Restorations | January 28 – 30, 2022

A comprehensive review of posterior ceramic restorations will be covered. Dr. Stevenson will stress the adherence of proven, well-documented techniques based on clinical studies, and will take you through numerous scenarios of preparation design, temporization techniques and cementation. How to incorporate the biomimetic approach to conserve tooth structure is integral to this session.

Module IV: Anterior Ceramic Restorations | March 11 – 13, 2022

During the final module, Dr. Stevenson will review the latest advancements in anterior ceramic veneers, crowns, partial coverage “crowners” and onlay restorations. The workshop has been designed to provide you with a deep understanding of the entire restorative process from materials science and adhesion to the placement and adjustment of the finest anterior ceramic veneer restorations possible. Dynamic occlusion plays an important role, as well as aesthetics, in this challenging arena of indirect restorations. A decision tree for which material to use in each case will be presented which will improve your understanding and execution of both monolithic and bi-layered restorations of lithium disilicate, zirconia and feldspathic ceramics.

You Will Learn

- How to replicate form, function and aesthetics in both direct and indirect restorative materials
- To utilize adhesive materials in order to increase retention and longevity with minimal complications

- To assess and diagnose occlusion, and make appropriate alterations to restorations to maintain/improve occlusal stability
- How to approach complex restorative cases with a risk-based diagnostic and treatment planning algorithm that simplifies the process
- How to implement Digital Smile Design in your practice workflow
- Predictable techniques to close diastema, restore large class IV defects and veneer anterior teeth with seamless composite restorations
- To create exceptional ceramic veneers which resist chipping and staining over time
- To integrate the right material for the right case depending on biological, structural, regional and financial aspects

Who Should Attend

This workshop is designed for general dentists seeking advanced training in restorative techniques.

Early Bird Tuition: \$6,995 (for registrations received by September 28)

Regular Tuition: \$7,495

Program: 1:00 pm – 5:00 pm Fridays;

8:00 am – 5:00 pm Saturdays and Sundays

Location: Arthur A. Dugoni School of Dentistry, 155 Fifth Street, SF

Credits: This activity is designated for 80 units of continuing education credit.

Workshop is limited to 24 attendees; includes afternoon coffeetea service on Fridays and continental breakfast and lunch on Saturdays and Sundays.

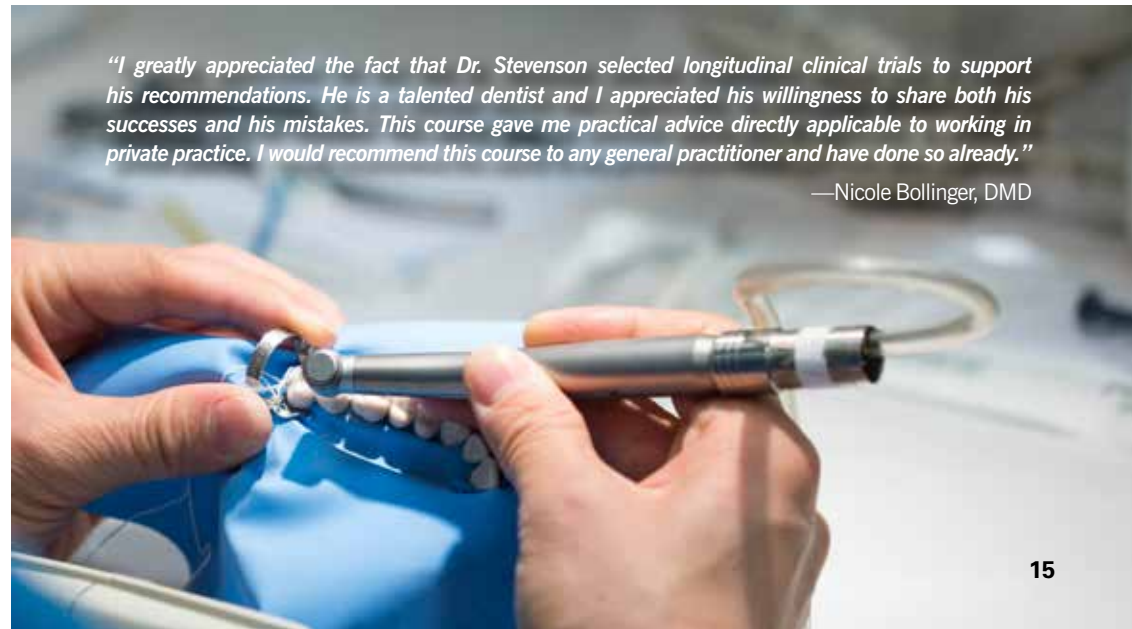
Faculty

Richard G. Stevenson III, DDS, earned his DDS degree and AEGD certificate from UCLA School of Dentistry and obtained board certification from the American Board of Operative Dentistry. He has served as a mentor for the Richard V. Tucker Study Club and taught at both the predoctoral and postdoctoral levels at UCLA. He garnered Teacher of the Year awards from numerous classes at UCLA, including the prestigious ADA Golden Apple Award for Teaching. He is a graduate of the Kois Center and has served as a CE faculty member for UCLA's Aesthetic and Implant Continuums. He maintains multidisciplinary practices in West Los Angeles and San Dimas. After a 26-year academic career, he started Stevenson Dental Solutions in 2015 to fill the gap between traditional education and real-world clinical dentistry for practicing dentists.

Cristina D. Lopez, DMD, is a 1991 graduate of the University of the East. After practicing general dentistry in the Philippines, she immigrated to the United States and obtained her dental license. She began as a lecturer in restorative dentistry at UCLA School of Dentistry in 2007, where she has served in several roles, including assistant to the chair in both the fixed prosthodontics and operative dentistry courses. She has given presentations throughout the U.S. and Asia in the areas of cast gold, veneers and dental materials. She is a member of the Los Angeles Advanced Restorative Study Club, is a highly sought after clinician in the UCLA Faculty Group Practice and has taught with Dr. Stevenson since 2008.

“I greatly appreciated the fact that Dr. Stevenson selected longitudinal clinical trials to support his recommendations. He is a talented dentist and I appreciated his willingness to share both his successes and his mistakes. This course gave me practical advice directly applicable to working in private practice. I would recommend this course to any general practitioner and have done so already.”

—Nicole Bollinger, DMD





Saturday, November 13, 2021

**Personalized Periodontal Medicine:
A New Approach to Total Body Health**

Doug Thompson, DDS

Periodontal disease detection criteria and how we treat active disease are changing. It is becoming apparent that it is not just an oral problem; it is a systemic problem. This lecture is designed for general practitioners, hygienists and all team members serious about advancing the periodontal health of their patients, the team and their practice.



Doug Thompson and Suzanne Saidi

The new personalized periodontal medicine approach features saliva (salivary diagnostics) and other individualized patient information to assist with disease diagnosis and treatment. Understanding the relationship of the oral-systemic link, complemented with the use of salivary diagnostics, can transform your routine hygiene services into value-added experiences of periodontal care and professional and financial growth for your entire office.

Featuring a series of case studies, Dr. Thompson will demonstrate that practicing this way is 21st-century periodontal care. With 12 years of testing and implementation of a personalized periodontal medicine protocol, he is unique in being able to present the data, research and clinical cases demonstrating this type of evidence-based and reliable disinfection protocol. By utilizing a comprehensive approach and adding organized structure, you can radically transform your practice and benefit your patients overall health and wellness.

You Will Learn

- ❑ To increase the periodontal awareness of everyone in the office to enhance team/patient discussion and early disease detection
- ❑ How to develop an office-wide, high-quality periodontal policy
- ❑ To gain awareness about how the bacterial profile may affect vascular disease concerns and heart attack risk
- ❑ How to use various clinical adjuncts to control inflammation and the rate of clinical attachment loss
- ❑ To discuss and explore strategies to address implementation challenges in leading a new periodontal standard of care



Your Mouth is the Gateway to Health and Wellness: Smiling from the Inside Out

Suzanne Saidi, DDS

The link between our diet and our periodontal health is an ever-changing area of research. In this lecture, Dr. Saidi will explore this fascinating systemic link in a few key ways, including: examining the current Standard American Diet and how this type of nutrition is impacting our patients both periodontally and holistically; discussing the links between probiotics, the microbiome and oral health; and discovering the impact of diet trends on periodontal and overall health. The program will pay special attention to the way oral tissue is a “canary in the coal mine” when it comes to identifying systemic disease caused by nutrition.

You will learn how to utilize a nutritionally based and a lifestyle-based comprehensive treatment plan. For your patients, this will add value and go above and beyond the traditional scope of care. During these times many people are looking for simple changes and extra support in creating and reaching their healthcare goals. Dental professionals often have a unique and special relationship with their patients. It is this relationship that allows us to empower healthy behaviors.

You Will Learn

- ❑ How to read and record high-quality patient health histories that emphasize oral health as a gateway to systemic health
- ❑ How fad diets and diet trends impact overall nutrition, oral health and long-term physiological wellness
- ❑ To explore the ways the Standard American Diet is hurting your patients’ progress toward their oral health goals
- ❑ How oral tissue is a first marker for many systemic conditions and how dental healthcare providers can help create overall happier, healthier patients

Who Should Attend

This symposium is intended for dental hygienists, general dentists, specialists, dental assistants, office managers and other dental office team members.

Tuition: \$175 Allied Dental Professionals; \$275 Dentists
\$145 for CDHA Members*
(includes lunch and morning coffee/tea service)

Program: 9:00 am – 4:00 pm

Check-in: 8:00 am

Location: Arthur A. Dugoni School of Dentistry, 155 Fifth Street, SF

Credits: This activity is designated for 6 units of continuing education credit.

CDHA members receive a \$30 discount

*Contact cedental@pacific.edu for the CDHA discount code.

Faculty

Doug Thompson, DDS, maintains a private practice in Michigan and is the founder of Wellness Dentistry Network—an online educational hub for dental teams implementing oral-systemic protocols. He is a faculty member at the Kois Center and a board member of the American Academy of Oral Systemic Health. Dr. Thompson has completed a fellowship in anti-aging and regenerative medicine from the American Academy of Anti-Aging Medicine and is a published author of a chapter in the textbook: *Personalized and Precision Integrative Cardiovascular Medicine*.

Suzanne Saidi, DDS, received a DDS degree from the Dugoni School of Dentistry and later spent time in Finland researching migration patterns of oral cancer cells. She is a former clinical instructor, CPC instructor and past president of the Alumni Association at the Dugoni School. She is also a fellow of the Pierre Fauchard Academy and earned a certificate in health coaching from the Institute for Integrative Nutrition. As an experienced and engaging public speaker, Dr. Saidi has given hundreds of presentations curated for everyone from dental professionals and dental study clubs to entrepreneurs and the general public.

University of the Pacific, Arthur A. Dugoni School of Dentistry would like to acknowledge and thank Ivoclar Vivadent, OraVital and Patterson Dental for their generous support of this program.

This is Not a Drill: Real Life Medical Emergencies in the Dental Office



Saturday, November 20, 2021

This lecture course will cover the most encountered medical emergencies in the dental office. Practical and efficient methods to recognize, diagnose, refer or treat conditions such as shortness of breath, chest pain, altered consciousness, loss of consciousness, swallowing/aspirating a foreign object, rapid heartbeat and shakiness will be discussed. Understanding the basic physiology of these conditions and the appropriate contemporary interventions will help dental professionals prepare, identify and manage potential medical emergencies effectively and promptly as they occur.



James Tom

Long-held recommendations and directives will be challenged and replaced with new evidence- and case-based scenarios to include optimizing the dental chair for basic life support, removing ammonia inhalants from the medical emergency kit, adequate mask ventilation for rescue breathing and pulse oximetry and AED use. Dr. Tom's presentation will conclude with several real-life medical emergency cases. Participants will be guided into recognizing and correctly determining a proper course of action given a presentation of the conditions mentioned above. Specialists, generalists and allied dental professionals will find these scenarios helpful to their practice and should be ready to implement these protocols after active discussion.

You Will Learn

- ❑ To recognize common patient complaints that indicate an impending medical emergency
- ❑ To prepare yourself, your staff and your surroundings to manage medical emergencies
- ❑ To understand evidence-based therapies used to treat common medical emergencies outside of a hospital setting
- ❑ To implement strategies within your practice to prevent or minimize medical emergencies
- ❑ To employ contemporary monitoring and rescue aids (pulse oximetry, automatic external defibrillators, glucometers and newer drug therapies) that are in alignment with emergency medical services and emergency room physicians

Who Should Attend

This informative course is designed for dentists, specialists and all members of the dental team.

Tuition: \$295 Dentists; \$195 Allied Dental Professionals (includes lunch and morning coffee/tea service)

Program: 9:00 am – 4:00 pm

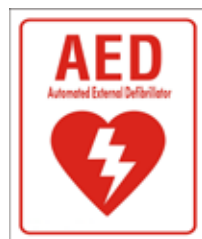
Check-in: 8:30 am

Location: Arthur A. Dugoni School of Dentistry, 155 Fifth Street, SF

Credits: This activity is designated for 6 units of continuing education credit.

Faculty

James Tom, DDS, MS, is a board-certified dentist anesthesiologist who trained at University of Southern California and Ohio State University. He was president of the American Society of Dentist Anesthesiologists during the American Dental Association's recognition of the specialty in 2019. He has served on the Commission on Dental Accreditation as the dental anesthesiology representative. Dr. Tom has authored numerous guidelines for professional anesthesiology and dental organizations. He is also a consultant for the American Academy of Pediatrics on dental anesthesiology.



Infection Control After COVID-19 and the California Dental Practice Act



Saturday, January 8, 2022

Infection Control After COVID-19

John Molinari, PhD

Dental healthcare professionals and their patients can be exposed to a variety of bacteria, viruses and fungi via blood, oral fluids and respiratory secretions, and effective infection prevention in clinical settings is vital. Science-based CDC recommendations, OSHA regulations, as well as recommendations from dental organizations will be discussed to support recent infection control updates and modifications. The COVID-19 pandemic caused a review of PPE and other equipment that were used in dental settings before emergence of the SARS-CoV-2 respiratory pathogen. Current and emerging information pertaining to suggested PPE and air quality modifications will be considered.



John Molinari and Bruce Peltier

You Will Learn

- ❑ To comprehend the basis for application of standard precautions and transmission-based precautions in an infection prevention program
- ❑ To utilize components of a comprehensive infection control plan
- ❑ The governmental infection control modifications necessitated by the COVID-19 pandemic
- ❑ The most recent updates for CDC recommendations and OSHA requirements for dentistry

California Dental Practice Act

Bruce Peltier, PhD, MBA

This course is a review of the essential elements of the California Dental Practice Act.

You Will Learn

- ❑ The Dental Practice Act:
 - What it is and where to find it?
- ❑ Acts in violation of the Dental Practice Act
- ❑ Effective informed consent practices
- ❑ Laws governing the prescribing of drugs
 - Keeping or losing your license (citations, fines, revocation, suspension)
- ❑ License renewal regulations and procedures
- ❑ How dentists and auxiliaries get into trouble
- ❑ Advertising in dentistry
- ❑ Child abuse, elder abuse and domestic violence reporting
- ❑ Termination of care and patient abandonment
- ❑ Substance abuse and diversion

Who Should Attend

The Dental Board of California requires that all dentists, registered dental hygienists and registered dental assistants take two units each of dental law and infection control every two years in order to renew their licenses.

Tuition: \$145

Program: 9:00 am – 1:00pm

Location: Live, interactive webinar via Zoom

Credits: This activity is designated for 4 units of continuing education credit.

Faculty

John A. Molinari, PhD, earned a PhD in microbiology from University of Pittsburgh and subsequently worked as a faculty member in its School of Dental Medicine. He is currently professor emeritus at University of Detroit Mercy, where he served for 32 years as professor and chair of the Department of Biomedical Sciences and director of infection control. He was infection control director for Dental Advisor and has served as an infectious disease consultant for the CDC, ADA and regional hospitals. He has published more than 500 scientific articles, text chapters and abstracts and lectures internationally on infectious diseases and infection control.

Bruce Peltier, PhD, MBA, is an emeritus professor of psychology and ethics at the Dugoni School of Dentistry where he directed the biomedical ethics program. A graduate of West Point, he has a PhD in counseling from Wayne State University and has received training at the Kennedy Institute of Ethics at Georgetown University. He is author of *The Psychology of Executive Coaching*, *Dental Ethics Primer* and the hypnosis CD, *Relieving Dental Anxiety*. He has provided remediation services for dentists disciplined by the Dental Board of California for the past 25 years.

Oral Surgery for General Practitioners: Take Yourself to the Next Level of Proficiency



Saturday, February 5, 2022

This informative and interactive hands-on workshop will teach general practitioners concepts and skills in oral surgery. Video clips on the fundamentals of oral surgery and model work will be sent to participants in advance to prepare them for the program. Hit the ground running with the essentials of using a blade, how to effectively use a periosteal elevator for tissue reflection, what flap to use and where, optimizing use of elevators and forceps, how much force is too much, elevators vs. luxators, how to use a “skinny” bur in the PDL and other basics.



Karl Koerner

During this workshop, you will learn how to apply surgical extraction techniques on life-like dentoform models that simulate patients. Hands-on activity will include: faster and easier surgical extractions; how to quickly and safely remove root tips; sectioning of multirrooted teeth; multiple extractions with alveoloplasty; and basics of maxillary third molar impactions.

You Will Learn

- ❑ How to build on the basic foundations of oral surgery
- ❑ The “must have” surgery instruments
- ❑ How to avoid and manage complications
- ❑ When a surgical highspeed is fine for exodontia but with certain caveats
- ❑ Ridge grooming techniques for dentures
- ❑ How to suture like a surgeon

Who Should Attend

This workshop is designed for dentists interested in building on their oral surgery concepts and skills.

Early Bird Tuition: \$645 (for registrations received by January 5)

Regular Tuition: \$695

Program: 9:00 am – 5:00 pm

Check-in: 8:30 am

Location: Arthur A. Dugoni School of Dentistry, 155 Fifth Street, SF

Credits: This activity is designated for 7 units of continuing education credit.

Workshop is limited to 30 attendees; includes lunch and morning coffee/tea service.

Faculty

Karl Koerner, DDS, MS, is a former associate professor in oral surgery at Roseman University of Health Sciences, College of Dental Medicine in Utah and is currently an adjunct professor. He has presented hundreds of didactic and participation oral surgery courses in the U.S. and around the world. He is the author of many articles on oral surgery for general dentists, has authored or co-authored four books on oral surgery and has made several surgery DVDs with Dr. Gordon Christensen. He is past president of the Utah Dental Association and Utah Academy of General Dentistry. Dr. Koerner received oral surgery training in the U.S. Army where he completed a general practice residency. He received the AGD’s Weclaw Award for his contributions to dentistry and dental education and the Utah Dental Association’s Distinguished Service Award.



SAVE MORE \$ WITH CDE DISCOUNTS

Alumni Association Members

15%

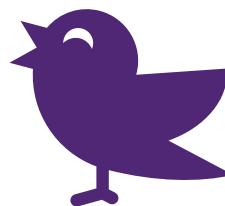
Dues-paying alumni and associate members of the Dugoni School of Dentistry are eligible for a **15% discount** off regular tuition for most programs sponsored by the Division of Continuing Dental Education.

Recent Dugoni School Graduates

20%

Recent graduates of the Dugoni School of Dentistry, from the Classes of 2016 – 2021, are eligible for a **20% discount** off regular tuition for most programs sponsored by the Division of Continuing Dental Education.

Early Bird Tuition Discounts – All Participants



Early Bird Tuition is available to everyone and is offered for most hands-on programs sponsored by the Division of Continuing Dental Education. The deadline for the Early Bird Tuition is typically 30 days prior to the program start date and a discount code is not needed. Check our CDE catalog for specific deadlines.

**These discounts do not apply towards travel programs or specially discounted programs, and are non-transferable. The offers cannot be combined with other CDE discounts.*

Email cedental@pacific.edu
to receive your alumni discount code.
Register online at dental.pacific.edu/CDEclasses





February 7 – 11, 2022
Waikoloa Beach Marriott Resort & Spa
Big Island, Hawaii

27th ANNUAL

IslandDentalColloquium

photo courtesy of Waikoloa Beach Marriott Resort & Spa

PROGRAM INFORMATION

University of the Pacific, Arthur A. Dugoni School of Dentistry and University of California, San Francisco, School of Dentistry, invite you to join us for the 27th Annual Island Dental Colloquium. We are offering an outstanding educational opportunity featuring three excellent speakers. Course sessions run from **7:30 am – 11:30 am** each day. Take advantage of this unbeatable travel education program combined with the beauty and excitement of the Big Island of Hawaii.

COURSES

Essential Pharmacology for Treating Medically Complex Dental Patients

Thomas Viola, R.Ph, CCP

Dental professionals must frequently draw upon their knowledge of pharmacology for optimal care of today's medically complex dental patients. Faced with ever-changing medication therapy guidelines, many dental professionals simply cannot keep up with the latest trends in disease state management. This lecture will provide an overview of the dental implications of prescription medications, non-prescription medications, herbal products, nutritional supplements and substances of abuse most frequently used by patients. This essential information will be given in a format which makes it practical and useful for all members of the dental team.

The Chamber of Self-Medication Secrets: What's in Your Patient's Medicine Cabinet, Self-Medication and Dental Considerations

Thomas Viola, R.Ph, CCP

Patients continue to self-medicate with a variety of prescription and non-prescription drugs with limited, and often biased, information and faced with rising prescription drug costs. Many patients add or substitute drug products in their medication regimen, unaware of potentially serious adverse outcomes and often without mention during a review of their medical history. This lecture will provide you with an overview of the dental considerations of the most popular prescription and non-prescription drugs and supplements that your patients use to self-medicate. From case scenarios, you will learn techniques useful in successfully identifying self-medication and obtaining a complete patient medication history.

Lasers in Dentistry: Can it Really Help Me and My Dental Practice Team?

Peter Rechmann, DMD, PhD

This lecture will provide a short history about lasers in dentistry, how lasers work and how they can be helpful in the daily dental office routines. All commercially available dental laser wavelengths will be discussed, providing ample examples of how they can be used, clinical indications for use, advantages and potential weaknesses. The pathway from the basic laboratory studies in laser caries prevention to successful, clinical applications for preventing caries will be illustrated. Dr. Rechmann will demonstrate why short-pulsed carbon dioxide (CO₂) lasers are extremely efficient in altering acid prone carbonated enamel, the type of enamel presented in the mouth, into a more acid resistant hydroxyapatite or even fluorapatite. Clinical studies using this specific laser wavelength for caries prevention in vital teeth will be discussed.

Book your trip online at islanddentalhawaii.com

Take advantage of our discounted group rates
 at the Waikoloa Beach Marriott Resort & Spa

photo by Robin Lopez/unsplash

Cariology and Cardiology

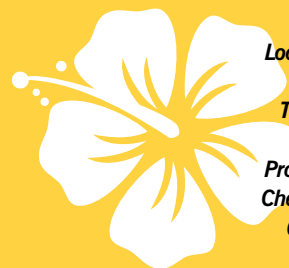
Robert Lustig, MD, MSL

"Mountain Dew Mouth" has been the scourge of dentists for decades. But there's a new disease which affects even more people: "Mountain Dew Liver." Non-alcoholic fatty liver disease (NAFLD) wasn't discovered until 1980; and now up to 40% of Americans suffer from it, and it is the leading cause of liver transplantation. This disease belies all our other chronic diseases, including diabetes, heart disease and cancer. And, it is due to our excessive sugar consumption. This lecture will discuss the relationship between failure to properly address the causes of chronic diseases, how it diminishes the ability to provide effective care and viable methods to move forward.

Oxygen, Airway Development in the Newborn: The Risk for Chronic Disease

Robert Lustig, MD, MSL

Cells grow in the absence of oxygen (glycolysis), but differentiate in the presence of oxygen (Kreb's cycle). Cell growth vs. burning is determined by three enzymes: PI3-kinase, AMP-kinase and mTOR. When these three are dyssynchronous, chronic diseases occur. Neonatal airway growth is therefore crucial to prevention of adult disease. Nipple sucking in the infant and chewing in the toddler grow the airway; but today's processed food environment interferes with airway growth, as exemplified by the epidemic of both malocclusion and obstructive sleep apnea in the population.



Dates: February 7 – 11, 2022
Location: Waikoloa Beach Marriott Resort & Spa
 Big Island, Hawaii
Tuition: \$899 Dentists; \$649 Allied Dental Professionals
 (includes continental breakfast each morning)
Program: 7:30 am – 11:30 am daily
Check-in: 7:00 am on Monday, February 7
Credit: This activity is designated for 20 units
 of continuing education credit



Robert H. Lustig, MD, MSL, is an emeritus professor of pediatrics in the Division of Endocrinology and the Institute for Health Policy Studies at UCSF. His research and clinical practice has focused on childhood obesity and diabetes. He holds a bachelor's degree from MIT, a doctorate in medicine from Cornell University Medical College and a master's degree in law from U.C. Hastings College of the Law. Dr. Lustig has fostered a global discussion of metabolic health and nutrition and is the author of 200 academic works and several popular books such as *Fat Chance: Beating the Odds Against Sugar, Processed Food, Obesity and Disease*.



Peter Rechmann, DMD, PhD, is a professor at UCSF's Department of Preventive and Restorative Dental Sciences. He is director of the Clinical Sciences Research Group and has been involved in clinical research for more than 40 years. His research relates to caries prevention including laser use, light-based diagnostic tools and new caries prevention delivery systems. Dr. Rechmann is successfully funded by industry grants and has published more than 160 papers and book chapters.



Thomas Viola, R.Ph, CCP, is a board-certified pharmacist who also serves the dental profession as a clinical educator, professional speaker and published author. He has presented hundreds of dental CE courses, nationally and internationally, in the areas of oral pharmacology and local anesthesia. Through his informative, humorous and engaging presentations, he has earned his reputation as the "go-to" specialist for making pharmacology practical and useful for all members of the dental team.

Register for the program
 online at
dentistry.ucsf.edu/cde
 or contact UCSF at
cde@ucsf.edu | 415.514.0778



photo by Mitch Meyers/unsplash

Registered Dental Hygienist in Alternative Practice - Virtual Program



February 25 – May 27, 2022

Led by Elena Francisco, RDHAP, MS, this online program is designed for dental hygienists interested in expanding their knowledge and ability to treat people with complex physical, medical or psychological needs and patients in underserved communities. It fulfills the Dental Hygiene Board of California's 150-hour education requirement needed to apply for an RDHAP license. The virtual program, offered twice a year, consists of live interactive webinars, online modules and a field study.



Elena Francisco and Paula Watson

The Dugoni School of Dentistry Difference

- ❑ A personalized program for RDHs led by practicing RDHAPs
- ❑ The only RDHAP program offered by an accredited dental school in California
- ❑ A fully online program approved by the Dental Hygiene Board of California
- ❑ Interest-free payment plans available to qualified candidates
- ❑ Funding available through the Sallie Mae Smart Option Student Loan®
- ❑ Convenient virtual program accessible from anywhere in California

Curriculum Topics

- ❑ Dental hygiene practice and theory
- ❑ Treating medically complex patients, geriatric patients and children with and without special needs
- ❑ Oral pathology
- ❑ Pharmacology
- ❑ Information management
- ❑ Developmental disabilities and oral health care
- ❑ Medical and dental emergencies
- ❑ Business administration for dental hygienists

Faculty: Elena Francisco, RDHAP, MS; Paula Watson, RDHAP, MS

Tuition: \$3,400

Deposit: \$400 (non-refundable)

Format: Live, interactive webinars, online modules and a field of study

Credits: This activity is designated for 150 units of continuing education credit.

INTERNATIONAL bone 2022 SYMPOSIUM IN IMPLANT DENTISTRY

Saturday and Sunday | March 19 – 20, 2022 | San Francisco

LEARN FROM THE LEADING BONE GRAFTING EXPERTS AT THE
3RD INTERNATIONAL BONE SYMPOSIUM

Len Tolstunov, DDS, (USA) – Director and Moderator

Presenters:

Vishtasb Broumand, DMD, MD (USA)

Arash Khojasteh, DDS (Iran)

Waldemar Polido DDS, PhD, MS (USA)

Adi Rachmiel, DMD, PhD (Israel)

Tetsu Takahashi, DDS, PhD (Japan)

Tara Aghaloo, DDS, MD, PhD (USA)

Early Bird Tuition: \$745 (for registrations received by February 4, 2022)

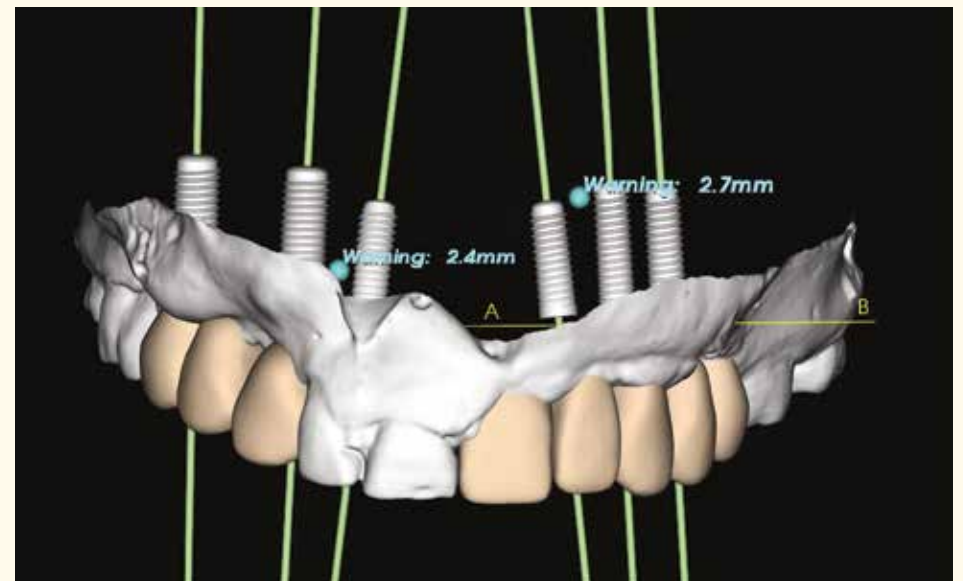
Regular Tuition: \$795

Credits: 12 units

Location: Arthur A. Dugoni School of Dentistry
155 Fifth Street, San Francisco

Register online at dental.pacific.edu/CDEclasses

For more information, contact CDE at cedental@pacific.edu or (415) 929-6486.



GENERAL INFORMATION

THERE ARE 3 WAYS TO REGISTER FOR OUR PROGRAMS:

- 1 ONLINE** at dental.pacific.edu/CDEclasses
Dugoni School of Dentistry dues-paying alumni receive 15% off regular tuition for most programs; recent grads receive 20% off.
- 2 MAIL** the attached registration form along with your payment to:
University of the Pacific, Arthur A. Dugoni School of Dentistry
Continuing Dental Education
155 Fifth Street, 4th Floor
San Francisco, CA 94103
- 3 PHONE** in your registration to us at (415) 929-6486



SCAN THIS QR CODE
TO REGISTER BY SMARTPHONE

Registrations are processed in the order in which they are received. Upon receipt of your registration and tuition, a confirmation will be emailed to you. For live patient programs, participants will be required to provide proof of liability insurance and a copy of their dental license.

Email Requirement

A unique email address is needed to register, receive confirmation and access CE certificates for all programs offered by the Division of Continuing Dental Education at the Dugoni School of Dentistry. Our new registration system enables you to manage and track your CE and print your certificates. If you wish to register more than one person, please obtain their individual email address and other personally identifiable information.

Enrollment and Cancellation Policy

The Division of Continuing Education reserves the right to end registration when an enrollment limit is reached and to cancel, modify or alter content or faculty for any course if circumstances indicate the need for such a change. If the school finds it necessary to cancel a course, a full tuition refund will be granted. All attempts to contact registrants will be made as soon as possible in the event of a course cancellation. Other than tuition, the Arthur A. Dugoni School of Dentistry is under no financial obligation to reimburse participants for airline tickets, hotel reservations or any other costs incurred should the need to cancel or reschedule a program arise.

For participant cancellations received at least two weeks prior to course date, a refund or credit will be issued towards a future Division of Continuing Education course. Refunds or tuition credits will not be issued for participant no-shows or cancellations less than two weeks prior to the course date.

Course Credit

The Dugoni School of Dentistry is authorized to award continuing education credits by the Dental Board of California. These courses meet the Dental Board of California's requirements for issuance of units of continuing education. One unit of credit is awarded for each hour of instruction. All courses are accepted by the Academy of General Dentistry for fellowship/mastership credit. University of the Pacific, Arthur A. Dugoni School of Dentistry is an ADA CERP recognized provider. ADA CERP is a service of the American Dental Association to assist dental professionals in identifying quality providers of continuing dental education. ADA CERP does not approve or endorse individual courses or instructors, nor does it imply acceptance of credit hours by boards of dentistry. Concerns or complaints about a CE provider may be directed to the provider or to the Commission for Continuing Education Provider Recognition at www.ada.org/cerp. The University is also a member of the Association for Continuing Dental Education (ACDE).



OUR LOCATION

University of the Pacific Arthur A. Dugoni School of Dentistry

155 Fifth Street
San Francisco CA 94103 (415) 929-6486
web: dental.pacific.edu/ce1 email: cedental@pacific.edu

Public Transportation

We are located two blocks from the Powell Street MUNI/BART Station in downtown San Francisco with multiple transit connections nearby.

Parking

Hourly parking is available at the Fifth and Mission Garage, immediately adjacent to the dental school. Enter from Mission Street or Minna Street (off Fifth Street).

For more information go to: <http://is.gd/dugonilocation>

REGISTRATION APPLICATION

REGISTER ONLINE 24/7 at dental.pacific.edu/CDEclasses

You will receive acknowledgment of your enrollment by email. Registrations will be accepted in order of receipt. Please duplicate and complete one form for each registrant.

First Name _____ Middle Initial _____ Last Name _____

Title DDS DMD RDH RDA CDT Other _____

State of License _____ License Number _____

Male Female Birth Year _____

Email Address _____

Yes, I want to receive email notifications of upcoming continuing dental education programs at the Dugoni School of Dentistry.

Preferred Address _____

City _____ State _____ Zip _____

Telephone _____

Dental School _____ Class Year _____

Current dues-paying Dugoni School of Dentistry alumni member? Yes No

Specialty:

- Endodontics General Practice Oral Pathology Oral Radiology Oral Surgery
 Orthodontics Pediatric Dentistry Periodontics Prosthodontics Public Health

PLEASE ENROLL ME (Please duplicate form for additional registrations)

Course Title _____

Date _____ Tuition \$ _____

Course Title _____

Date _____ Tuition \$ _____

Course Title _____

Date _____ Tuition \$ _____

Check Visa MasterCard American Express Discover

Credit Card Number _____

Expiration Date _____ Verification Code _____

Signature _____

Please make all checks payable to University of the Pacific

Send completed application(s) with payment to: University of the Pacific, Arthur A. Dugoni School of Dentistry
Continuing Dental Education
155 Fifth Street, 4th Floor
San Francisco, CA 94103

Questions? cedental@pacific.edu or 415.929.6486

dental.pacific.edu/CDEclasses

COURSE CALENDAR

SEPTEMBER 2021

- 18 & 10/16 Special Care Dentistry: A Health-Centered Approach to Oral Care for Special Needs Patients
LIVE WEBINAR
- 18 RDAEF Program begins
HANDS-ON COURSE

OCTOBER 2021

- 1-2 Exploring the Dark Side of Black Triangles: The Art of Pink and White Composites
HANDS-ON COURSE
NEW COURSE
- 9 Lights, Camera, Anterior Composites
HANDS-ON COURSE
NEW COURSE
- 23 New Dimensions in Dentistry: Obstructive Sleep Apnea, Bruxism and TMD
NEW COURSE
- 29 Super Dentist Boot Camp: Advanced Restorative Techniques with Intensive Hands-on Training begins
HANDS-ON COURSE
NEW COURSE

NOVEMBER 2021

- 13 Dental Hygiene Symposium: Personalized Periodontal Medicine and Your Mouth is the Gateway to Health and Wellness
NEW COURSE
- 20 This is Not a Drill: Real Life Medical Emergencies in the Dental Office
NEW COURSE

JANUARY 2022

- 8 Infection Control After COVID-19 and the California Dental Practice Act
LIVE WEBINAR

FEBRUARY 2022

- 5 Oral Surgery for General Practitioners: Take Yourself to the Next Level of Proficiency
HANDS-ON COURSE
NEW COURSE
- 7-11 27th Annual Pacific/UCSF Island Dental Colloquium
Big Island, Hawaii
- 25 RDHAP Program begins
VIRTUAL COURSE